



Hi Resolution HDMI camera with integrated user interface and WDR function

Models: HDMI-EC830X, EC830X ULTRA

This Advanced HD camera featured superb clear image quality, build in on-screen UI menu, and build in image save directly to SD card memory. The Internal menu allows image enhancements, easy settings and other functions by using the supplied wireless mouse.

The camera module connects directly to display (monitor), projector or other equipment via HDMI plug for real-time viewing. It's working standalone without need of a computer.

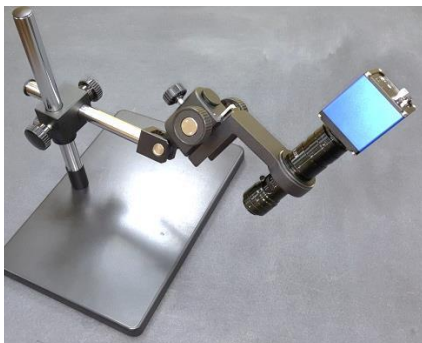
The HD digital image processing using a DSP chip, makes the image more clear and stable, reducing noise and flicker. It's greatly reduce eye fatigue when long time watching. The enhanced **WDR** function (Wide Dynamic Range) was added to improve light levels in an image, between the darkest and the brightest areas.

This HD HDMI camera with memory function is a high-end product mainly use for the quality (QC) vision inspection, electronics, medical, delicate assemblies, microscopy, etc...

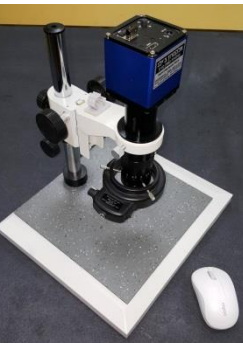


Hi Resolution HDMI camera module with integrated user interface

Optional items: Stand / bracket, various lenses, HDMI Monitor, Light units, etc...



LT Stand: Longer arm with multi tilt + vertical



VT Stand: Vertical

Features

- International 1080P standard
- HDMI pure digital HD output, support for 16:9 display
- Build-in on screen UI menu
- High-speed. Reduced flicker and delay phenomenon
- WDR (Wide Dynamic Range) function
- Sony CCD sensor
- Adjustable RGB, Sharpness, and noise levels
- Auto White Balance and auto exposure
- Image capture and video record directly to SD card
- Build in functions for image flip/mirror, freeze, compare, etc...
- Can fitted with various optional lenses and stands on request
- Optional: On screen measuring functions [Ultra model].

Camera unit Specification:

Image resolution: 1920 * 1080

Shooting speed: 60 frames / second @ 1920 * 1080

Sensor pixel size: 2.4µm

Sensor: CMOS 1/1.8"

Color adjustment: R, G, B can be adjusted independently

White balance adjustment: Yes

Exposure: 0.03-918ms, with auto mode

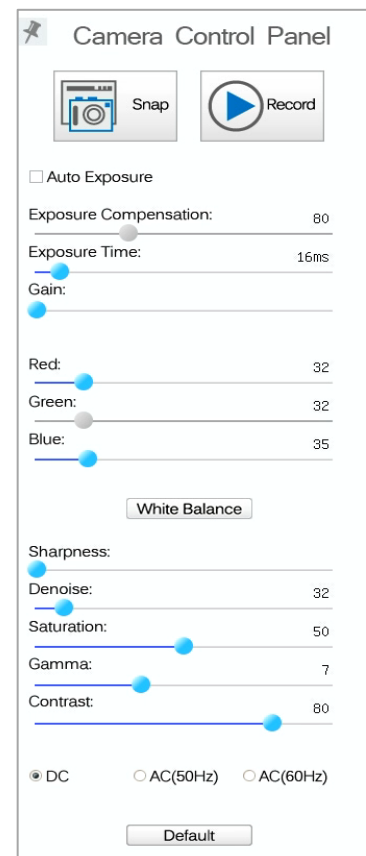
Storage method: SD card

Lens: C - Mount

Power supply: 12V

Size: (camera body with C mount collar):- (L)88 x (W)64 x (H)89mm

Working Environment: 5-45 deg.C, Indoor, clean & dry area 30-80%RH



On screen UI control



Build-in SD card Gallery browser

User panel:



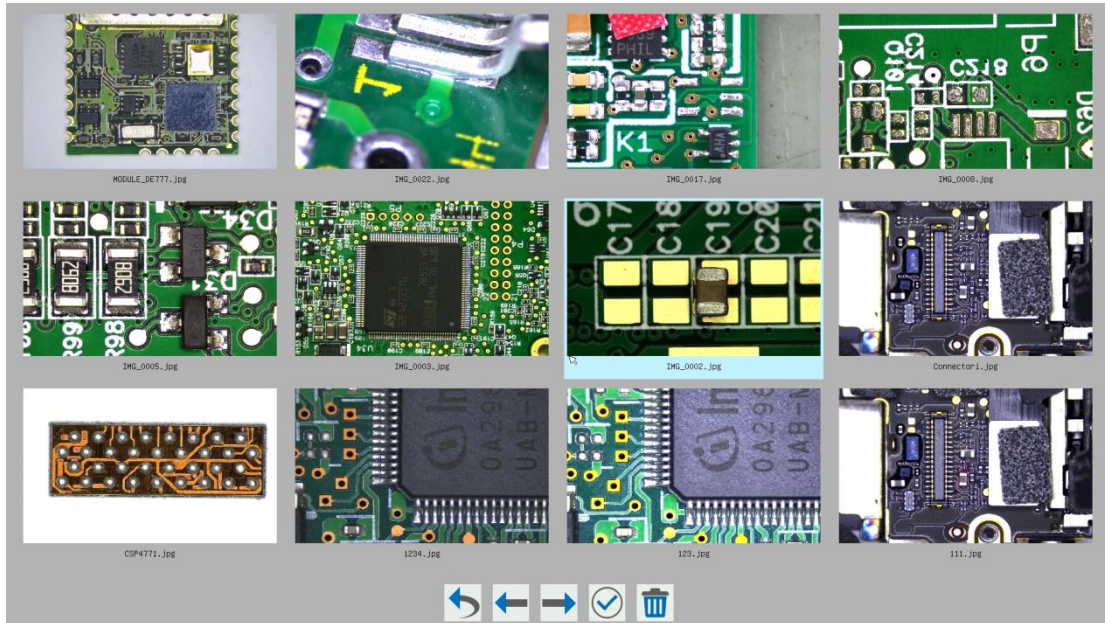
Power / Status LED:

Red when power connected (off)

Blink Blue during power start-up

Steady Blue when ready (on)

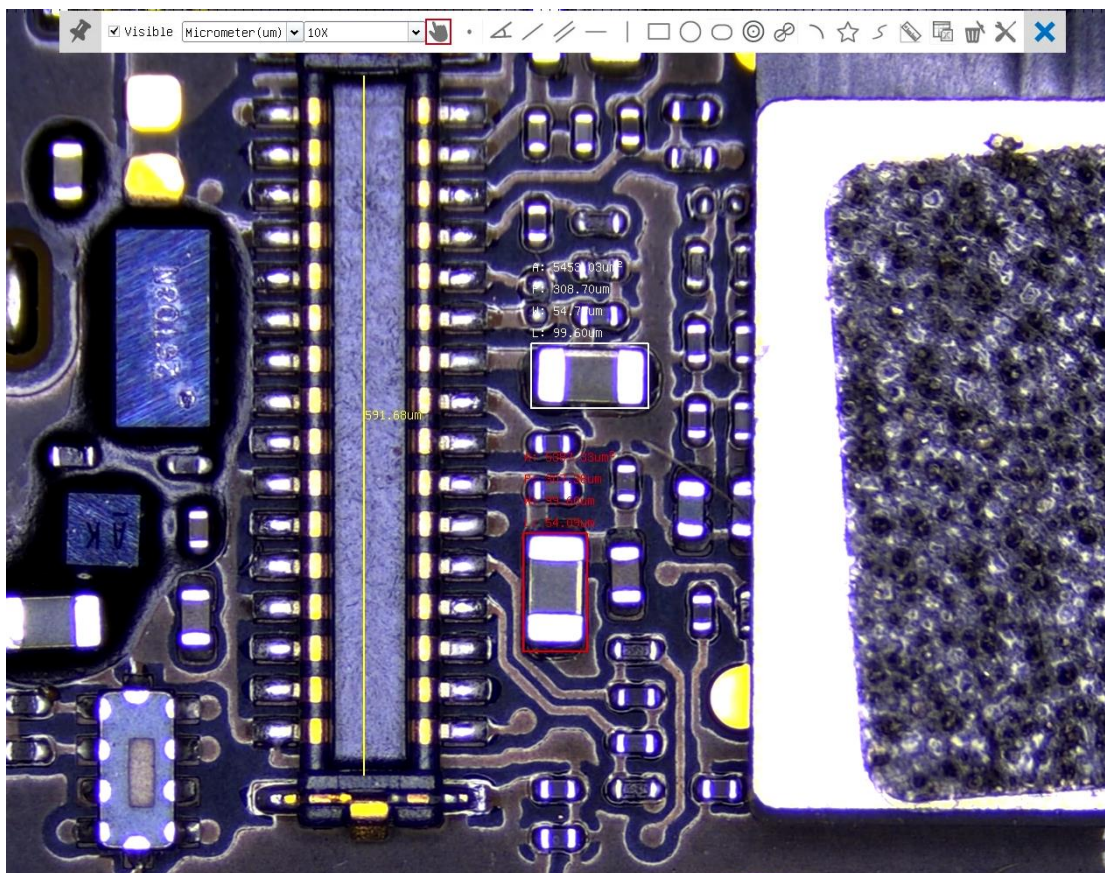
Build-in SD card Gallery browser:



Additional commands: Horizontal / Vertical Flip, Freeze, Zoom, WDR (Wide Dynamic Range) and other settings



Measuring option [Ultra model]:



Note: The information, images and specs may subject to modifications without prior notice
Rev. 1610B